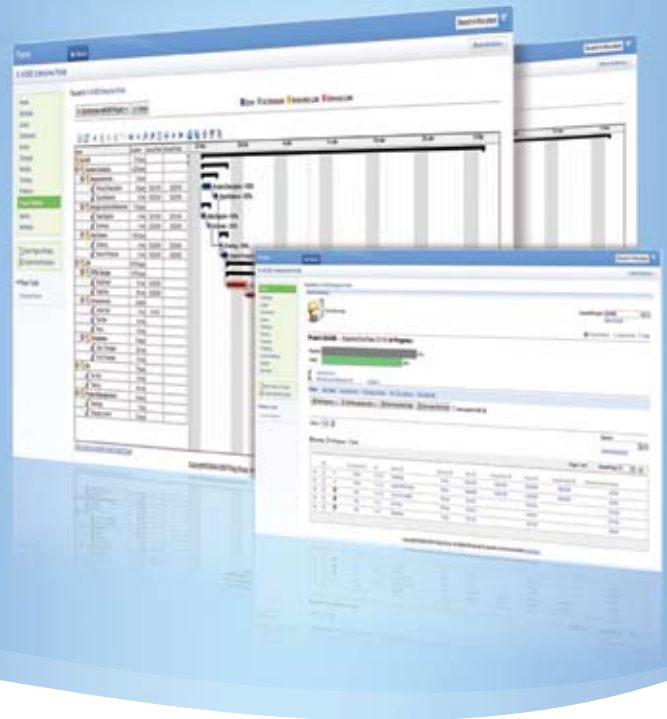




# ProjExec®

## Project Management 2.0 for IBM® Lotus® Quickr™



### Transform Quickr into Next Generation Social Project Management

ProjExec opens project participation to everyone. Unlike traditional project management solutions, ProjExec's social and collaborative approach to project management is focused on streamlining project execution and produces significant business value, including:

- Agile, more effective teams for improved productivity
- Transparency and improved communication
- Lower operational costs and administrative overhead

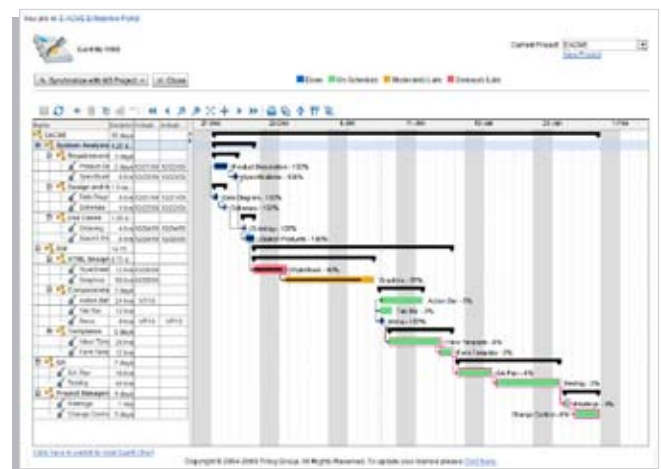
There's no need to change the way you work on projects. ProjExec lets project managers continue to use their favorite project management tools while project team members become active project participants without changing the way they collaborate today. ProjExec is professional project management with the functional equivalent of Microsoft Project Server and SharePoint for Quickr at a fraction of the cost.

ProjExec works with most popular project management tools enabled by Trilog's innovative bi-directional connector for Microsoft Project that transforms static project plans into integrated project activities shared with the entire project team. ProjExec works with other popular project management tools including any PM tool that supports MPP, MPX or MSXML project schedule file formats.

### Best TOTAL Lotus Collaboration Solution

ProjExec is the recipient of numerous honors, most recently the 2010 IBM Lotus Award for Best TOTAL Lotus Collaboration Solution. ProjExec delivers Project Management 2.0 as a natural extension of the IBM Lotus collaborative platform by integrating with multiple offerings from the IBM Lotus portfolio, including

- Sametime
- Notes calendar
- Domino
- Lotus Connections
- Quickr Document Library



## Robust project templates and tools

ProjExec for Quickr includes robust templates to create project places in Quickr with ease. Customize ProjExec project places with out-of-the-box Quickr components, like content libraries, discussion forums, blogs and wikis.

**ProjExec Project Place** - Publish, schedule, manage and track progress for multiple projects from a single project place. Complete project planning and execution functionality, including:

- Visual Gantt editor with critical path analysis
- Publishing to/from Microsoft Project
- Time Management
- Issue and Change Management
- Resource Management
- Ad hoc reporting

**ProjExec Portfolio Place** - Analyze and track multiple portfolios of all projects for complete cross project visibility and control.

**ProjExec Administration** - Conveniently manage default settings and configuration options for ProjExec places in Quickr.

## Benefits and Beneficiaries

ProjExec for Quickr delivers benefits to all project participants and stakeholders – from team members to project managers to LOB executives.

**Project Managers** - Save time, save money. Focus on project execution, not project administration.

**Distributed Team Members** - Share, contribute, track time and task progress with ease.

**Line of Business Executives** - Enjoy visibility and control with dashboards, cross-project portfolios.

## Project management for everyone

**ProjExec Express** - All the essential scheduling, tracking and project management tools in a single Quickr place. Complete with dynamic visual drag and drop Gantt charts, cross-project/multiple project support with alerts, dashboard, portfolios and more! Ideal for smaller teams or single departments within larger organizations.

**ProjExec Enterprise** - Comprehensive enterprise class project life cycle management that typically targets larger organizations managing complex projects. All the features of the Express edition plus workflow, issue, change, time management and ad hoc reporting. The cost effective alternative to Microsoft Enterprise Project Server and SharePoint.

## Platforms supported

ProjExec for Quickr runs with:

IBM Lotus Quickr 8.2+  
services for IBM Lotus® Domino®

IBM Lotus Quickr 8.1.1+  
services for IBM WebSphere® Portal®

## For more information

To learn more about ProjExec for Quickr, please visit [www.triloggroup.com/quickr](http://www.triloggroup.com/quickr)

Call (800) 818-2199 or contact:  
[sales@triloggroup.com](mailto:sales@triloggroup.com)

